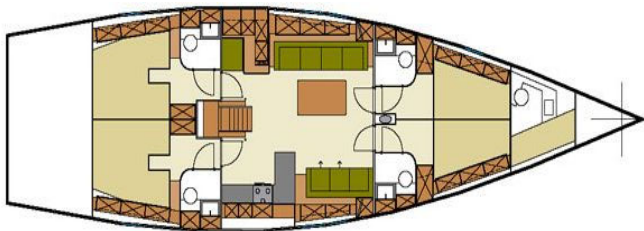


Boat

Hanse 540e

| | |
|-------------------------------|----------------------|
| Year | 2009 |
| Cabin | 4 |
| Berth | 8 |
| WC | 4 |
| Crew cabin+wc | yes |
| Length | 16,08 mt |
| Beam | 4,91 mt |
| Draft | 2,80 mt |
| Water tank | 710 lt |
| Fuel tank | 395 lt |
| Randa full batten North Sails | 85,10 mq |
| Self taking jib North Sails | 58,00 mq |
| Engine | Yanmar 110 Hp diesel |



Inclusive:

Assurance RC+ Kasco;
Gas Bottle;
Accessories;
Galley Complete.

Electronics:

Autopilot;
Electronic Simrad;
Plotter;
Electric winch;
Windex;
Vhf;
Bose system.

More info:

- Colour Light Blue;
- Four cabins four bathrooms;
- Cabin crew with wc;
- Air conditioned and heating;
- Plasma Tv;
- Bimini top, Spray hood;
- Garage for tender.